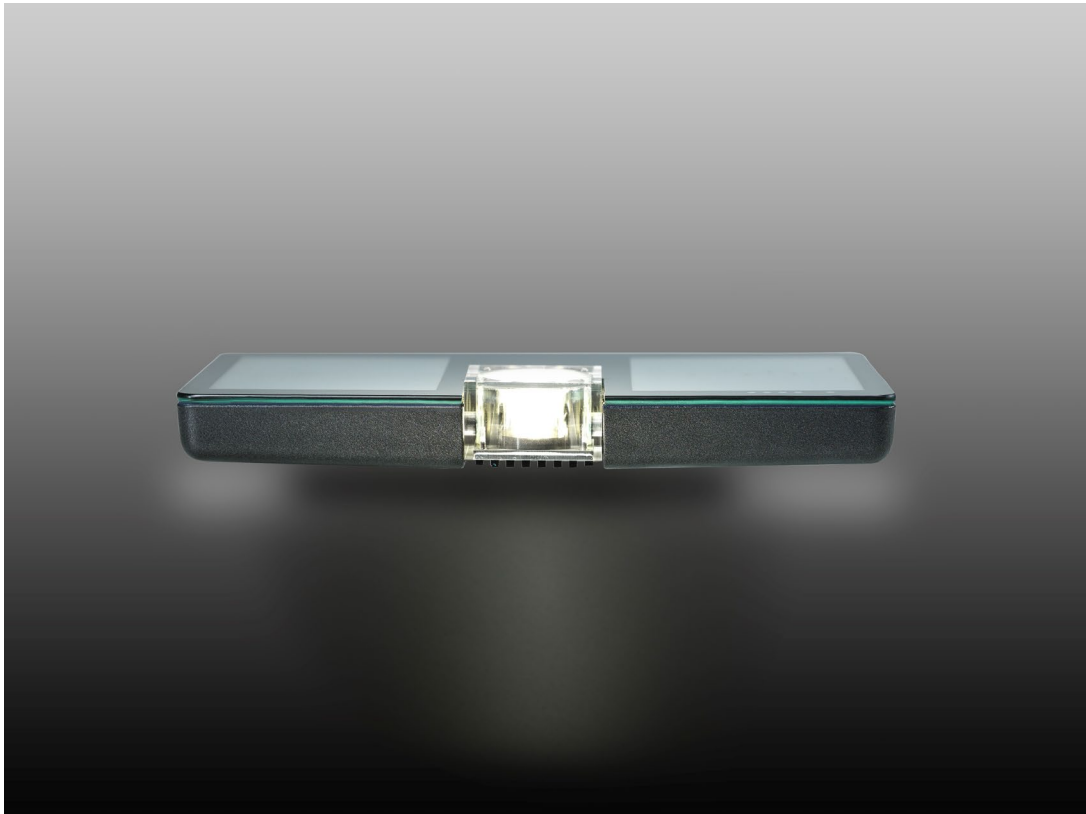


**NOWATT
LIGHTING**



ONYX PROJECTOR

User guide

Introduction.....	3
Overview.....	3
Unpacking.....	4
Operation.....	5
Fixture positioning tips.....	5
Control with the Nowatt Lighting application.....	6
Installation.....	9
Installation	9
Maintenance and care.....	10
Cleaning.....	10
Risks of material damage.....	10
Waste management.....	10
CE declaration of conformity.....	10
Warranty.....	11

Overview

Usage : Solar outdoor lighting projector connected with LED with no cabling.

The Onyx projector is standalone thanks to solar panels and a battery.

Optic at choice:

- 5°: very narrow circular optic
- 20°: medium circular optic
- 50°: wide circular optic
- 6/40°: elliptical optic
- 30/60°: elliptical optic

LEDs' colors:

- RGBW
- White shades 2700 K and 5700 K.
- White shades amber and 5700 K.

Structure : Molded aluminum frame with polyester thermo-painted finish.

Tempered glass plate, thickness 4 mm, silk-screen printed.

Battery LiFe PO4 (10 Ah).

Solar panel Sunpower Back Contact.

Motion sensor and USB socket.

Operating temperatures : - 10°C / + 60°C.

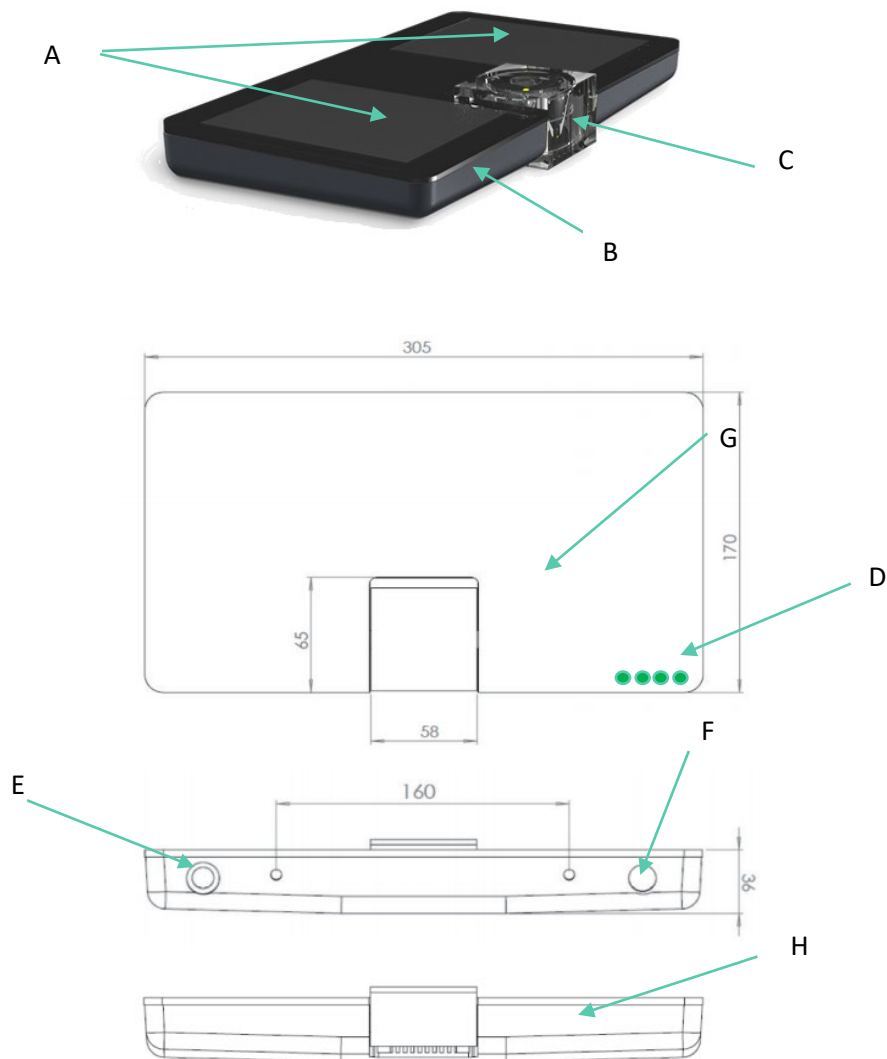
Class III – IP67 – IK10 – CE.

Product lifespan over 20 years.

Dimensions : 305 x 170 x 35 mm.

Weight : 2 kg.

Introduction



- A. Solar panels,
- B. Motion sensor
- C. Optical block,
- D. Indication LEDs,
- E. ON/OFF and scenario selection buttons,
- F. USB plug,
- G. Tempered glass protection plate,
- H. Cast aluminum frame with thermo-painted polyester finish

Unpacking

Check all parts of the product for damage.

Do not put the product into service in case of damaged solar panel or LEDs.

The identification number of your E-Onyx projector is indicated on a label at the back of the product.

Fixture positioning tips

Choose a suitable location where sunlight can directly reach the solar panel.

Avoid obscuration by eaves or trees.

In the northern hemisphere, favor installation to the south of obstacles (on facades, on a pole or other), or to the east or west. Do not install due north of an obstacle.

In the southern hemisphere, favor installation to the north of obstacles, to the east or to the west. Do not install due south of an obstacle.

Recommendations

The most critical time for solar lighting is winter.

Days are shorter than in summer, and the sun is lower in the sky, therefore the cast shadows are longer. Therefore, it is advisable to assess the correct positioning of a solar lighting device in winter, to avoid shadow areas.

It is advisable to draw up a layout plan of the site before installation. You can indicate the location of the devices there, making sure to note their identification numbers indicated on their labels.

Example

In winter, the sun is 21° in Bordeaux, France at noon. A 2-meter-high wall then has a shadow cast of 5 meters directed towards the North.

In summer, the sun is 68° in Bordeaux, France at noon. A 2-meter-high wall then has a shadow of 70 cm directed towards the North.

In Bordeaux in winter, the sun rises in the southeast at 7:30 a.m. and sets in the southwest at 4:30 p.m.

In Bordeaux in summer, the sun rises in the northeast at 4:30 a.m. and sets in the northwest at 8 p.m.

More information: www.sunearthtools.com/dp/tools/pos_sun.php?lang=en

Control with the Nowatt Lighting application

Turn on the projector manually

The ignition button is located at the back of the projector.

It also allows you to manually select the scenarios (the number of red LEDs corresponds to the scenario number). However, the application is more convenient to use remote projectors.

Download the Nowatt Lighting app

The Nowatt Lighting application is free to download from the Play Store and the Apple Store. You can download it on a Smartphone or a tablet.

Activate your Bluetooth connection

Start the Nowatt Lighting application on your Smartphone

The app asks you for permission to access Bluetooth. Tap "Allow" then "OK".

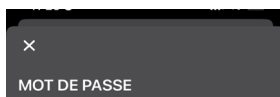
Home page

Products are divided into two groups: those you have already logged into are listed at the top in "My Modules". Others are listed below in "New Modules".

To connect to a device, click on its identification number shown in the menu.



Enter your access code



Nowatt Lighting communicated the access code in the user guide supplied with the product at delivery.

You can change the code to secure your product in the settings.

It is important to check with the person in charge of programming that the modified password will be recorded and distributed to those responsible for the project.

Homepage information

Identification number of your product

Mode : OFF / Activated / Demo

Identification of the model of your product

Settings

All scenarios available in the app

Battery charge status

Your module may display a 0% state of charge on startup. Wait a few seconds for the actual percentage to display.

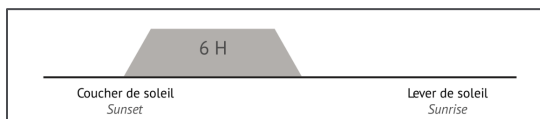
Product identification

It is possible to identify the device to which you are connected with your phone by pressing the OFF button. The projector in question will then emit a flash.

Select a light animation

1. Tap "Scenario" at the bottom of the screen.
2. Select a scenario from the 4 choices available at the top of the screen.
3. For each scenario, you have the possibility to adjust the white temperature of the LED or the color if your Onyx has RGBW LEDs.
4. To apply the scenario, tap "Use this scenario".

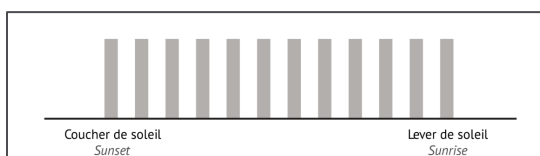
Scenario 1 : Lighting for 6 hours following sunset.



Scénario 2 : Lighting for 4 hours after sunset and 2 hours before sunrise.

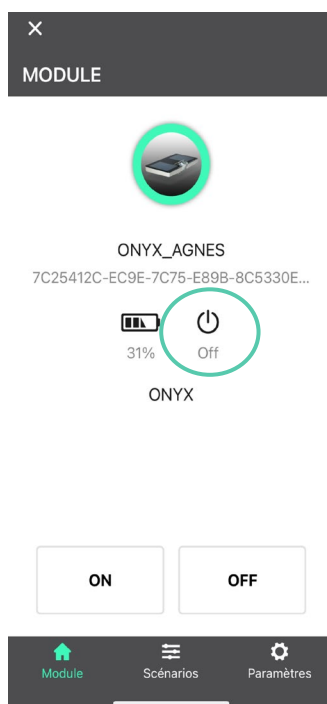
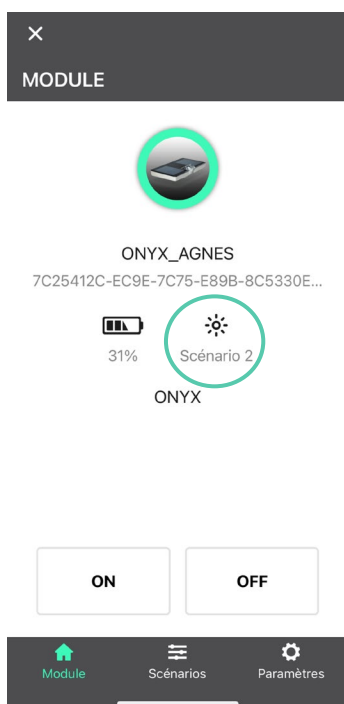


Scénario 3 : Lighting on detection of presence for 2 minutes, throughout the night.



Scénario 4 : Specific scenario programmed in factory by Nowatt Lighting, on demand at the order.

Check your programming



If the home page indicates OFF or Demo, your scenario is not saved, you must repeat the previous steps.

Installation

Use of fastening devices:

- Wall-mounted fastening. Steel treated with antioxidation wall bracket; black powder coated polyester finish
Length 50 mm (D1) or 200 mm (D2).



- Top bracket for column diameter 60 mm. Steel treated with antioxidation, black powder coated polyester finish.
Length 50 mm (D5) or 200 mm (D6).



- Base fixing built in steel treated with antioxidation, black powder coated polyester finish



Cleaning and care

The product requires no maintenance.

Regular checks for damage can increase the lifespan of the product.

Removing dirt can help increase product performance.

Risk of material damage

Unsuitable detergents may damage the luminaire.

Check surface tolerance with detergents.

If there is dirt or weather deposits on the solar panel, clean it with a soft cloth and mild detergent.

Waste management

Please observe the legal obligations relating to waste management.

Return old devices to your dealers or directly to Nowatt Lighting.

Do not dispose of old devices with unsorted household waste.

Do not throw old devices into fire or water.

CE declaration of conformity

This product complies with the requirements of the following standards, laws and directives:

- Electromagnetic Compatibility Directive 2004/108/CE
- RoHS Directive 2001/65/EC
- Act on waste electrical and electronic equipment (ElektroG)
- Batteries and Accumulators Act (BattG)
- WEEE Electrical and Electronic Devices Directive 2012/19/EU

Warranty

Nowatt Lighting products are manufactured with the utmost care.

The function and safety of this product have been tested according to the currently valid directives, with a final inspection.

Nowatt Lighting guarantees faultless condition and operation.

The warranty period is 24 months and begins on the day of sale to the customer.

It includes the elimination of defects resulting from a defect in material or construction.

The warranty will be provided at our discretion by repair or exchange of defective parts.

The warranty does not apply to wearing parts.

The warranty does not apply to damage or defects due to improper use or maintenance.

Consequential damage to other objects is excluded from the warranty.

The warranty only applies if the undisassembled device is returned accompanied by a brief description of the defect and a receipt or invoice bearing the date of purchase and the seller's stamp.

Please send the product properly packaged to the after-sales service.

In the event of faults not covered by the guarantee, contact your point of sale to find out if a repair of the device is possible.

Editing date: 02/08/2022

Nowatt Lighting

1 rue Guy Moquet, 13001 Marseille, France

+ 33 4 91 02 17 06

contact@nowatt-lighting.com

www.nowatt-lighting.com